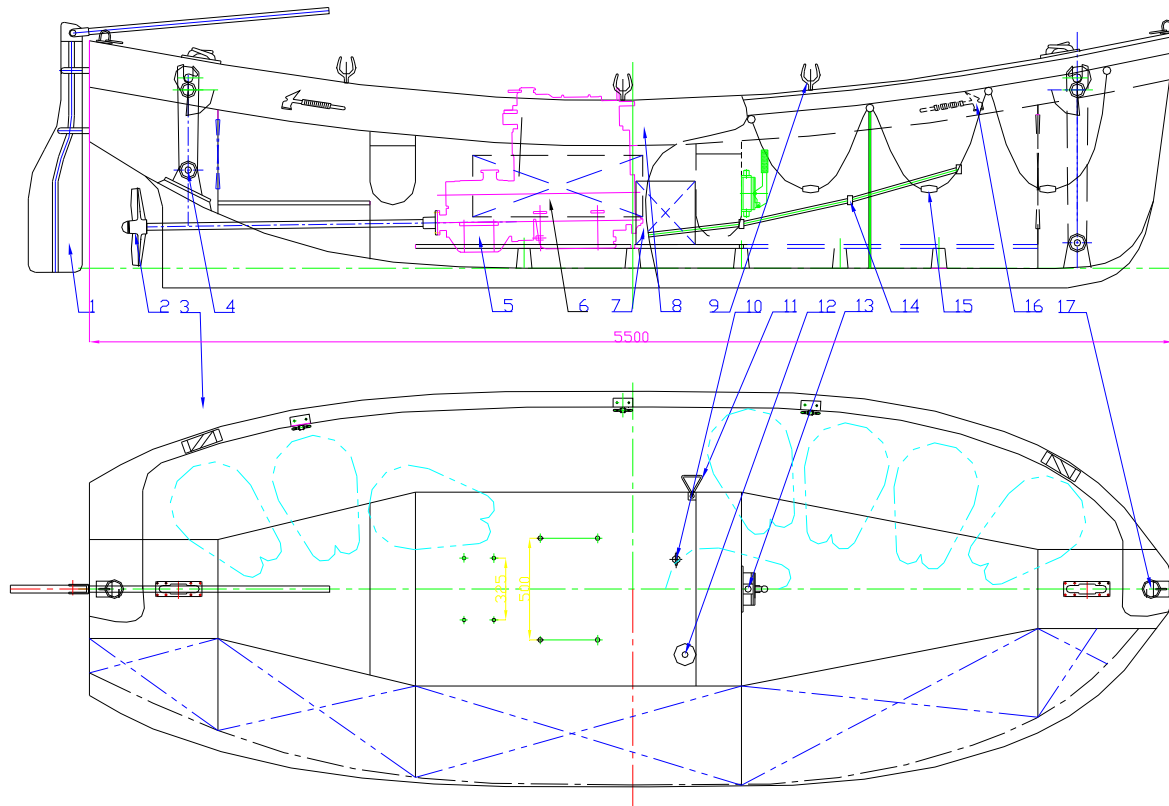


## 9、 General Arrangement Plan

### Main Dimensions

L=5.50m      B=2.00m  
 H=0.85m      Hook Span=4.50m  
 Persons=15P      Weight=2600kg



17		BITT RING	2	SUS304
16		HATCHET	2	PRO.
15		LIFELINE APPLIANCE (BUOY 24,RING 26)	2	ASS.
14		RIGHT HANDHOLD(BRACKET 14,PIPE 6M)	2	ASS.
13		MANUAL PUMP	1	PRO.
12		EXTINGUISHER INTAKE MOUTH	1	PRO.
11		TRANSMISSION DEVICE	1	ASS.
10		DRAIN PLUG	1	ZHMN55-5-1
9		OAR	6	SUS304
8		HULL STRUCTURE ARRANGEMENT	1	F.R.P
7		BATTERY BOX	1	ASS.
6		FUEL CASE	2	A3
5		DIESEL	1	PRO.
4		HOOK DEVICE	1	ASS.
3		PLIERS	4	SUS304
2		ENGINE、SHAFTING & PROPELLER	1	ASS.
1		STEERING DEVICE	1	ASS.
NO.	CODE NAME	DESCRIPTION	QTY.	REMARK